



# InterSystems IRIS Basics: Installation

Version 2019.1  
2019-04-09

*InterSystems IRIS Basics: Installation*

InterSystems IRIS Data Platform Version 2019.1 2019-04-09

Copyright © 2019 InterSystems Corporation

All rights reserved.



InterSystems, InterSystems Caché, InterSystems Ensemble, InterSystems HealthShare, HealthShare, InterSystems TrakCare, TrakCare, InterSystems DeepSee, and DeepSee are registered trademarks of InterSystems Corporation.



InterSystems IRIS Data Platform, InterSystems IRIS, InterSystems iKnow, Zen, and Caché Server Pages are trademarks of InterSystems Corporation.

All other brand or product names used herein are trademarks or registered trademarks of their respective companies or organizations.

This document contains trade secret and confidential information which is the property of InterSystems Corporation, One Memorial Drive, Cambridge, MA 02142, or its affiliates, and is furnished for the sole purpose of the operation and maintenance of the products of InterSystems Corporation. No part of this publication is to be used for any other purpose, and this publication is not to be reproduced, copied, disclosed, transmitted, stored in a retrieval system or translated into any human or computer language, in any form, by any means, in whole or in part, without the express prior written consent of InterSystems Corporation.

The copying, use and disposition of this document and the software programs described herein is prohibited except to the limited extent set forth in the standard software license agreement(s) of InterSystems Corporation covering such programs and related documentation. InterSystems Corporation makes no representations and warranties concerning such software programs other than those set forth in such standard software license agreement(s). In addition, the liability of InterSystems Corporation for any losses or damages relating to or arising out of the use of such software programs is limited in the manner set forth in such standard software license agreement(s).

THE FOREGOING IS A GENERAL SUMMARY OF THE RESTRICTIONS AND LIMITATIONS IMPOSED BY INTERSYSTEMS CORPORATION ON THE USE OF, AND LIABILITY ARISING FROM, ITS COMPUTER SOFTWARE. FOR COMPLETE INFORMATION REFERENCE SHOULD BE MADE TO THE STANDARD SOFTWARE LICENSE AGREEMENT(S) OF INTERSYSTEMS CORPORATION, COPIES OF WHICH WILL BE MADE AVAILABLE UPON REQUEST.

InterSystems Corporation disclaims responsibility for errors which may appear in this document, and it reserves the right, in its sole discretion and without notice, to make substitutions and modifications in the products and practices described in this document.

For Support questions about any InterSystems products, contact:

**InterSystems Worldwide Response Center (WRC)**

Tel: +1-617-621-0700

Tel: +44 (0) 844 854 2917

Email: [support@InterSystems.com](mailto:support@InterSystems.com)

# Table of Contents

<b>InterSystems IRIS Basics: Installation</b> .....	<b>1</b>
1 Installation Basics: Purpose .....	1
2 Before You Begin .....	1
3 Installing InterSystems IRIS on Windows 10 .....	1
4 Installing InterSystems IRIS on Red Hat Linux .....	2
5 Installing InterSystems IRIS on macOS .....	3



# InterSystems IRIS Basics: Installation

## 1 Installation Basics: Purpose

This guide help you get a single, licensed instance of InterSystems IRIS™ running on your desktop or virtual machine. This instance is ideal for you to try out the technologies described in our First Look guides.

We've provided instructions for [64-bit Windows 10](#), [Red Hat Enterprise Linux 7](#), and [Apple macOS 10.13](#).

**Note:** InterSystems Cloud Manager (ICM) provides a simple, intuitive way to provision cloud or virtual infrastructure and deploy the desired InterSystems IRIS architecture on that infrastructure, along with other services.

Do not use this guide to install a production instance or for any custom installation configurations; for help with those tasks, see the [InterSystems Cloud Manager Guide](#) or the [Installation Guide](#).

## 2 Before You Begin

Before you start installing InterSystems IRIS, make sure that you have:

- Full administrator or sudo rights on your machine.
- Access to a single-file executable installation kit (Windows) or tarball (Linux and macOS) for InterSystems IRIS.
- A valid license key for InterSystems IRIS in an accessible folder or directory, typically named `iris.key`.

The First Look you are working with may have specific requirements for an installation; for example, “Normal” security may be required. Make sure to review the “Before You Begin” sections of the First Look before you follow the directions below.

**Note:** After you have installed InterSystems IRIS, you can find procedures for connecting your Integrated Development Environment to the instance in [InterSystems IRIS Basics: Connecting an IDE](#).

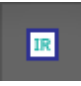
## 3 Installing InterSystems IRIS on Windows 10

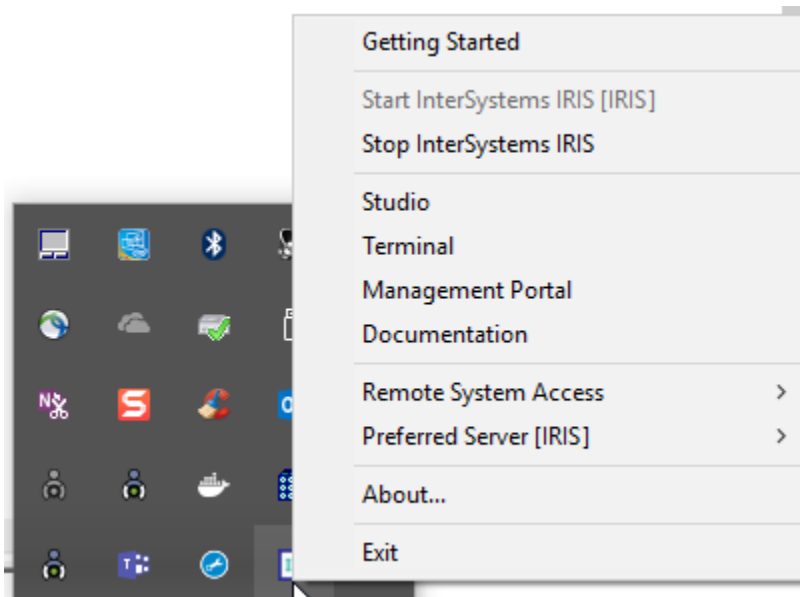
To install InterSystems IRIS on Windows 10:

1. In Windows Explorer, right-click the InterSystems IRIS installation executable and select **Run as administrator**. Click **Yes** in the resulting Windows user account control dialog.
2. If a **Select instance** dialog appears, choose **New Instance**.
3. Accept the license agreement and click **Next**.
4. In the **InterSystems IRIS Instance Name** dialog, enter a name for your instance of InterSystems IRIS, using only alphanumeric characters and underscores. Then click **Next**.

5. If the displayed destination folder for the installation is acceptable, click **Next**. If not, click **Change** to choose a different folder. Use a folder on your machine, not a mapped network drive.
6. In the **Setup Type** dialog, accept the default of **Development** and click **Next**.
7. In the **Initial Security Settings** dialog, choose the security type recommended by your First Look. If none is recommended, accept the default of **Minimal** and click **Next**.
8. (Normal and Locked Down security only) In the **Enter Credentials** dialog, choose **Run InterSystems IRIS under a defined Username account**, confirm that your Windows username and domain are correct, and enter your Windows password. Then click **Next**.
9. (Normal and Locked Down security only) In the **InterSystems IRIS Users configuration** dialog, enter and re-enter a password of 8–32 characters (alphanumeric and punctuation allowed). Make note of this password, since you will use it when you log into the main InterSystems IRIS management tools. Then click **Next**.
10. (Normal and Locked Down security only) For **Enter password for CSPSystem account**, enter and re-enter a password of 8–32 characters (alphanumeric and punctuation allowed). Make note of this password. Then click **Next**.
11. In the **Ready to Install the Program** dialog, click **License**. Navigate to your license key file and choose it. Then click **Install**. The installation process takes a few minutes.

For access to your new installation, right-click the up arrow  in the Task Bar. You should see a menu of icons. The

InterSystems IRIS icon looks like this  and if you right-click it, you'll see a list of management tools for the instance.



## 4 Installing InterSystems IRIS on Red Hat Linux

To install InterSystems IRIS on Red Hat Linux using a bash shell:

1. Create a group within Linux and add your user account to it.
2. Extract the installation files from the tarball.
3. Go to the directory to which you extracted the installation files.

4. Run the command `sudo ./irisinstall`, which issues a series of prompts.
  - a. If you are prompted to enter a number for your platform, enter the number listed for Red Hat Enterprise Linux.
  - b. For **Enter instance name**, enter a descriptive name for your instance. Use only alphanumeric characters and underscores.
  - c. Confirm the instance name by pressing Enter.
  - d. For **Enter a destination directory for the new instance**, enter the name of the directory for the InterSystems IRIS system files. Do not use a symlink. The directory need not exist yet on your machine.
  - e. Confirm that you want to create the new directory (or use the existing directory you entered) by pressing Enter.
  - f. For **Setup type <1>**, press Enter to accept the default installation type (Development).
  - g. For **Initial Security settings**, enter the number for the security type recommended by your First Look. If none is recommended, press Enter to accept the default of 1 (Minimal).
  - h. (Normal and Locked Down security only) For **Which user should be the owner of this instance?** enter the name of your user account.
  - i. (Normal and Locked Down security only) For **Please enter the common password for \_SYSTEM...**, enter (and then re-enter) a password of 8–32 characters (alphanumeric and punctuation allowed). Make note of this password, since you will use it when you log into the main InterSystems IRIS management tools.
  - j. (Normal and Locked Down security only) For **Please enter the common password for CSPSystem...**, enter (and then re-enter) a password of 8–32 characters (alphanumeric and punctuation allowed). Make note of this password.
  - k. For **What group should be allowed to start and stop this instance?**, enter the name of the group you created in step 1 above.
  - l. For **Do you want to enter a license key**, enter `y`. Then enter the full pathname of your license key (for example, `/home/user/iris/iris.key`).
  - m. The script displays the installation options you've chosen before proceeding. Press Enter to accept the choices.
5. Take note of the URL displayed at the end of the installation script's output: it is the URL for the Management Portal, which is the system administration user interface for InterSystems IRIS.
6. To check the status of and see other information about your newly installed instance, enter `iris list`.

## 5 Installing InterSystems IRIS on macOS

To install InterSystems IRIS on macOS using a bash shell:

1. Create a group within macOS and add your user account to it.
2. Extract the installation files from the tarball.
3. Go to the directory to which you extracted the installation files.
4. Run the command `sudo ./irisinstall`, which issues a series of prompts.
  - a. If you are prompted to enter a number for your platform, enter the number listed for macOS.
  - b. For **Enter instance name**, enter a descriptive name for your instance. Use only alphanumeric characters and underscores.
  - c. Confirm the instance name by pressing Enter.

- d. For **Enter a destination directory for the new instance**, enter the name of the directory for the InterSystems IRIS system files. Do not use a symlink. The directory need not exist yet on your machine.
  - e. Confirm that you want to create the new directory (or use the existing directory you entered) by pressing Enter.
  - f. For **Setup type <1>**, press Enter to accept the default installation type (Development).
  - g. For **Initial Security settings**, enter the number for the security type recommended by your First Look. If none is recommended, press Enter to accept the default of 1 (Minimal).
  - h. (Normal and Locked Down security only) For **Which user should be the owner of this instance?** enter the name of your user account.
  - i. (Normal and Locked Down security only) For **Please enter the common password for \_SYSTEM..."**, enter (and then re-enter) an alphanumeric password. Make note of this password, since you will use it when you log into the main InterSystems IRIS management tools.
  - j. (Normal and Locked Down security only) For **Please enter the common password for CSPSystem..."**, enter (and then re-enter) an alphanumeric password. Make note of this password.
  - k. For **What group should be allowed to start and stop this instance?**, enter the name of the group you created in Step 1 above.
  - l. For **Do you want to enter a license key**, enter *y*. Then enter the full pathname of your license key (for example, `/home/user/iris/iris.key`).
  - m. The script displays the installation options you've chosen before proceeding. Press Enter to accept the choices.
5. Take note of the URL displayed at the end of the installation script's output: it is the URL for the Management Portal, which is the system administration user interface for InterSystems IRIS.
  6. To check the status of and see other information about your newly installed instance, enter `iris list`.